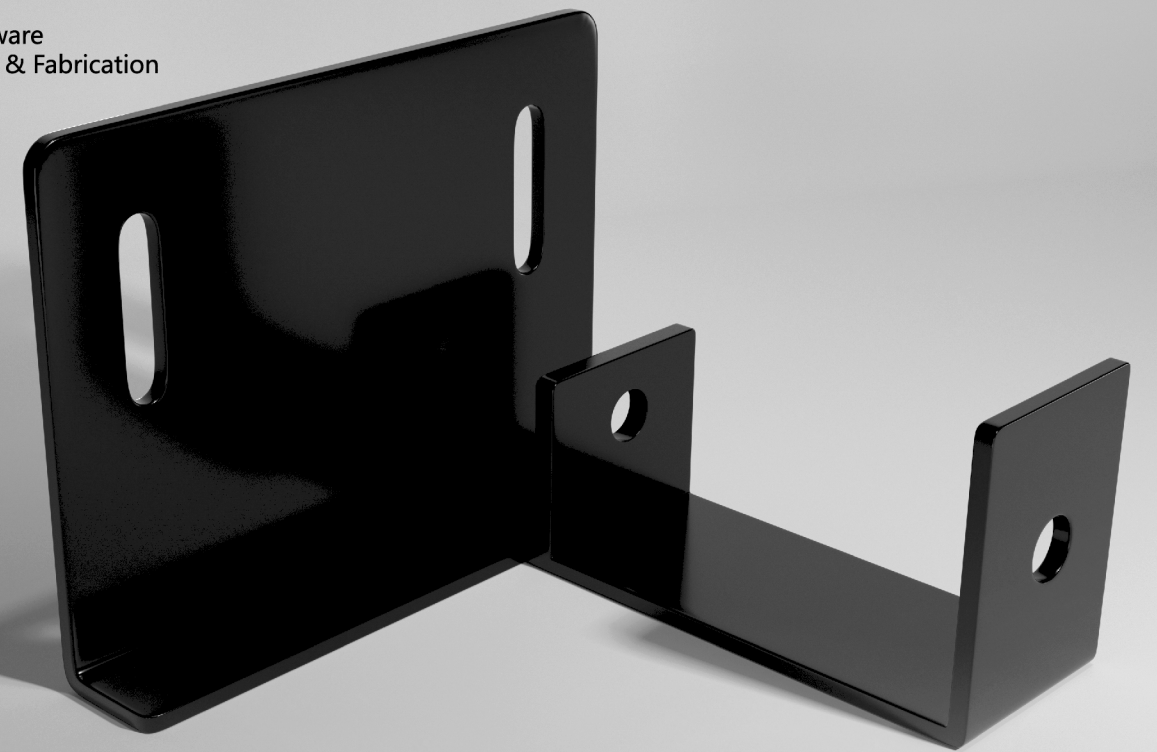


# product catalog 2020

Agriculture Machinery Parts  
Automotive stamping parts  
Building Accessories  
Electronic Components  
Fifth Wheel & Trailer parts  
Furniture parts  
Pole Line Hardware  
Stamping parts & Fabrication



**Hangzhou Emax Industrial Co.,Ltd**

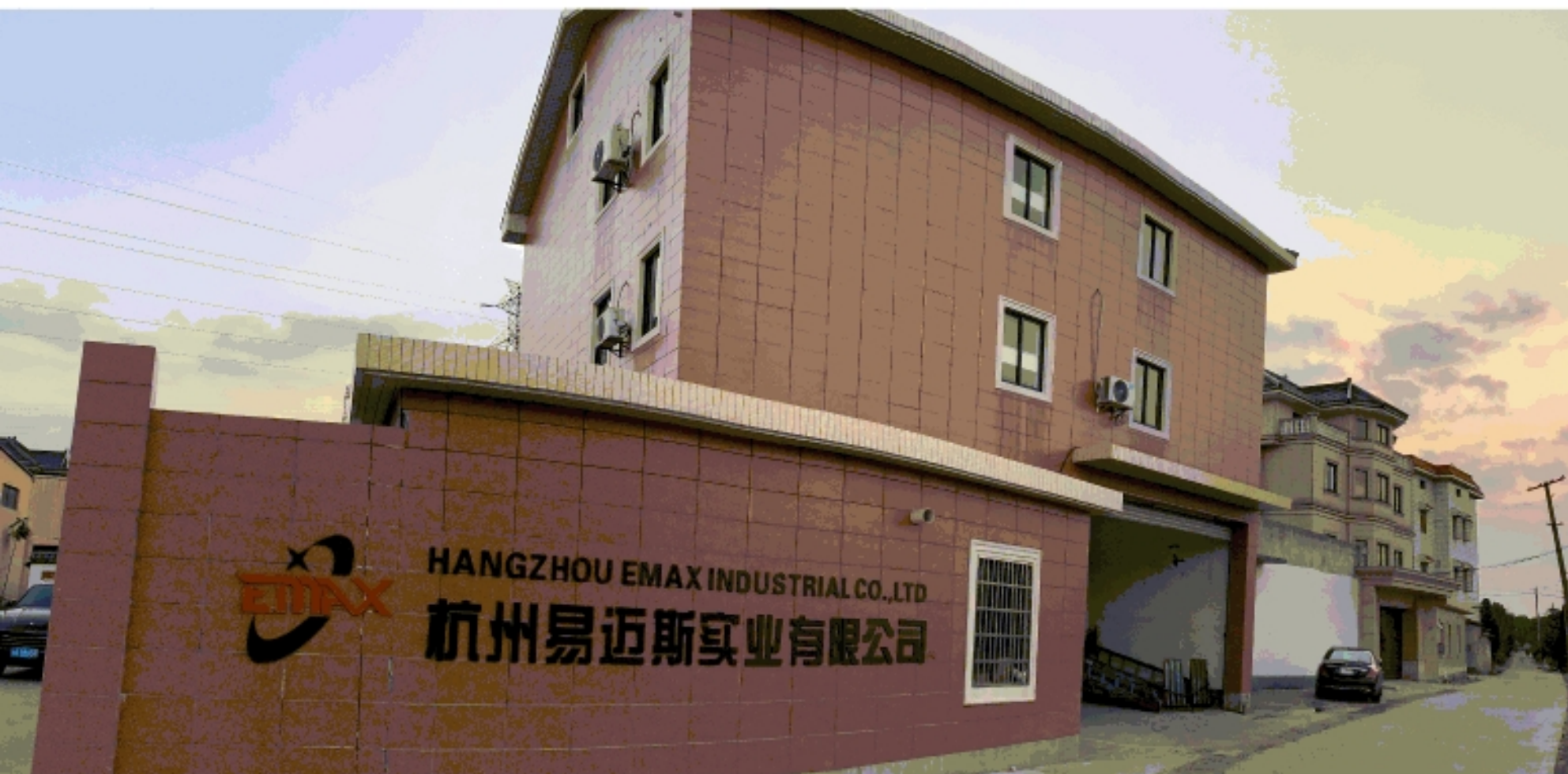
ADD: No393. Fengsheng Industrial Zone, Guali Town,  
Xiaoshan District, Hangzhou China .Postal code 311243.

<http://www.emaxmetal.com>  
E-mail: [info@emaxmetal.com](mailto:info@emaxmetal.com)  
[Peter@emaxmetal.com](mailto:Peter@emaxmetal.com)

TEL:0086-571-83737375  
0086-571-83733150  
Mobile: 0086-150-571-11391



**杭州易迈斯实业有限公司**  
HANGZHOU EMAX INDUSTRIAL CO.,LTD



## company profile

Hangzhou Emax Industrial Co.,Ltd. was founded in 1993, is an enterprise with comprehensive strength in researching and developing, producing, marketing, export trading and more. Its factory covers an area of 11,000 square meters, with robotic welding machines and up to 400 ton presses, widely used in Various Products. Its main business type includes : Poleline Hardware, Sheet Metal Fabrication, Agriculture Machinery Parts, Furniture Hardware, Auto Spare Parts . Its main product scope includes: stamping part, metal stamping, groudng hardware, pressing parts, aluminum parts, stainless steel parts, cooper parts, guy clamp, welding assembling, furniture parts, agriculture machine parts, customized stamping parts, etc.

### Products certificate:





## Workshop Show

We supply OEM service, according to your drawing or sample

- 20years experiences
- Perfect Quality
- 90% export to America
- Efficient Delivery
- 200 containers per year
- Attentive service

## Our Capabilities

- Blank stamping,Forming
- Tube bending,Cutting,Drilling
- Machining,Mould design&make
- Powder coating,Assembly
- Plate shearing,Sand blasting
- Spot welding,Robot welding
- Deep drawn,Threading
- Carbon Dioxide port welding

## Equipment

Emax own complete mechanical equipment line,professional technical staff. Emax are always looking to grow and improve on products manufacturing,R&D, quality check, domestic selling and overseas exporting.



Equipment Description	Quantity(sets)
Punch: 6.3 T	12
Punch: 10 T	9
Punch: 16 T	7
Punch: 25 T	4
Punch: 40 T	15
Punch: 63 T	5
Punch: 80 T	5
Punch: 125 T	2
Punch: 200 T	1
Punch: 250 T	1
Punch: 400 T	1
hydraulic press 315T	1
Bending machine 6 metre	1
Hot stamping	1
Cutting Machinery	2
shot blasting machine	1
lapping machine	1
Robot Welding	3
spot welding machine	3
carbon dioxide prot welding	5
argon arc welding	1
lathe machine	1
grinding machine	1
wire cut electrical discharge	4
multifunctional cutting	1
tapping threading	12
semi-automatic threading	1
multifunctional bending	1
Salt Spray Test	1
thickness gauge- EPK600	2
rockwell hardness testing	1

# Agriculture Machinery Parts



# Agriculture Machinery Parts



# Automotive stamping parts



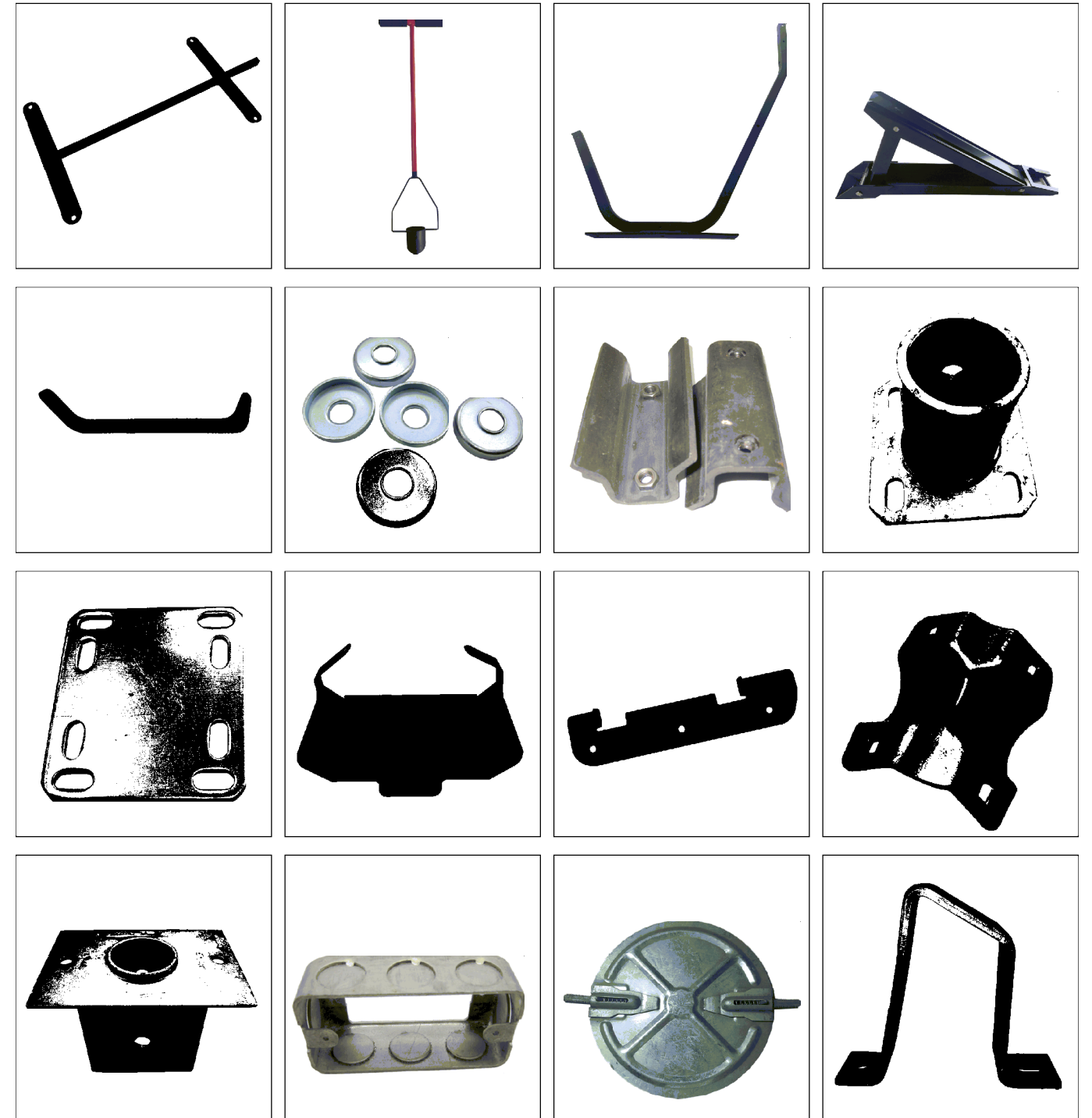
# Automotive stamping parts



# Building Accessories



# Building Accessories



# Electronic Components



# Fifth Wheel & Trailer parts



# Furniture parts



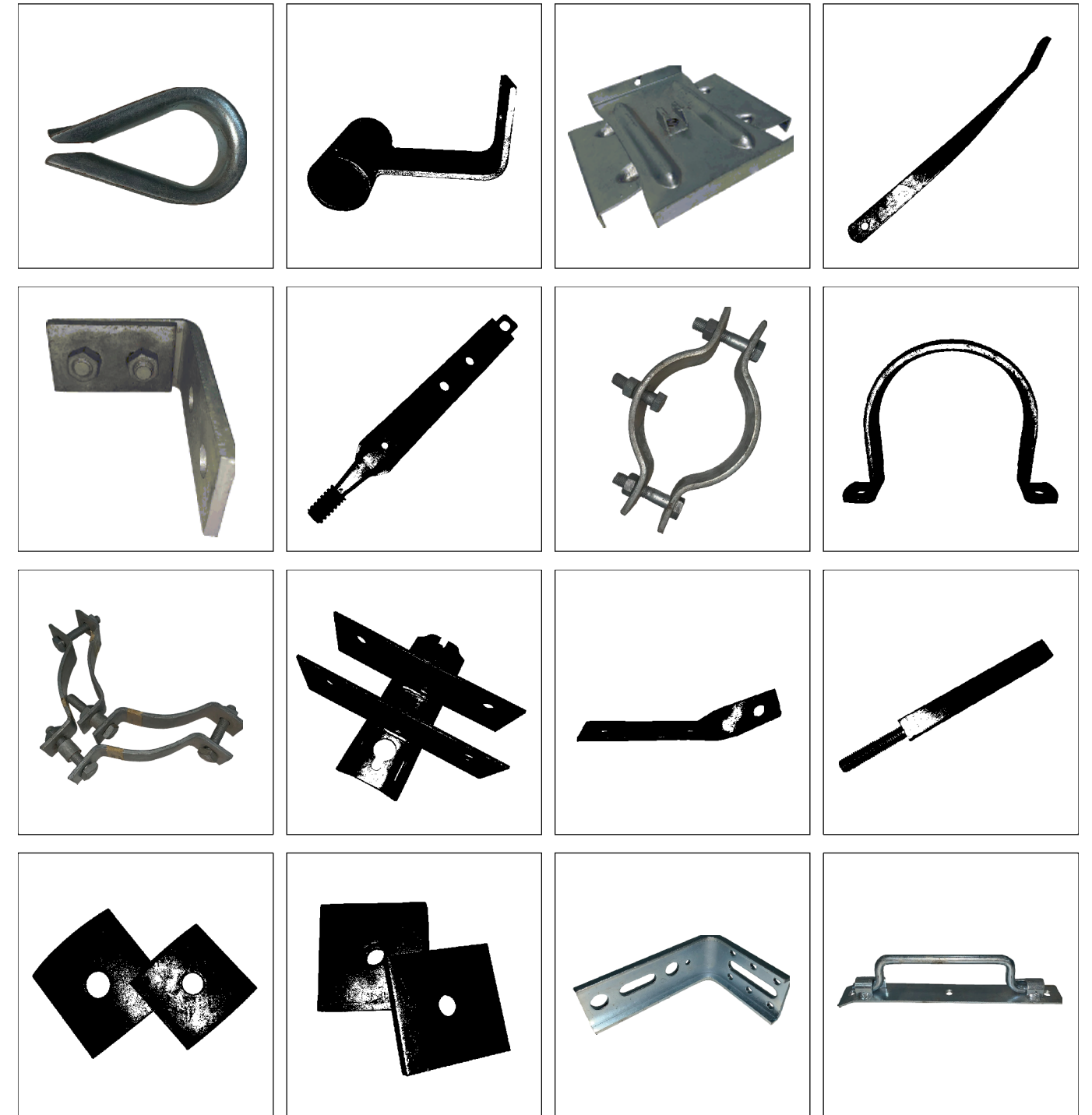
# Furniture parts



# Pole Line Hardware



# Pole Line Hardware



# Stamping parts & Fabrication



# Stamping parts & Fabrication





Hangzhou Emax Industrial

## EMAX- FOR YOUR NEED

Furniture hardware, steel stamping parts

OUR PROUCTS



Hangzhou Emax Industrial

## EMAX- FOR YOUR NEED

stamping parts for Agriculture machinery parts

OUR PROUCTS





Hangzhou Emax Industrial

## — EMAX- FOR YOUR NEED

Pole line Hardware, Sheet Metal Fabrication, Agriculture Machinery Parts, Furniture Hardware, Auto Spare Parts .

OUR PROUCTS



Hangzhou Emax Industrial

## — EMAX- FOR YOUR NEED

Stamping Parts for Automobile

OUR PROUCTS

